

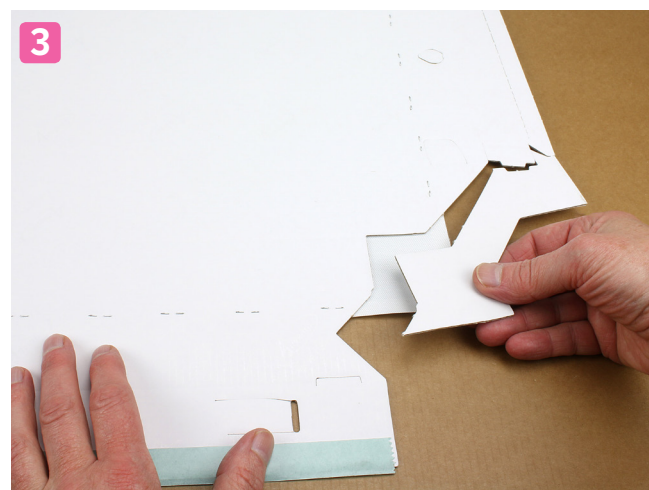
Assembly Instructions You will need a stapler with a 93mm throat and good scissors



First, print your image using one of the pre-set templates in the QuickPro software. Place the ArtWrap board adhesive strips side down. Then align the trimmed canvas using the corner guidance tabs.



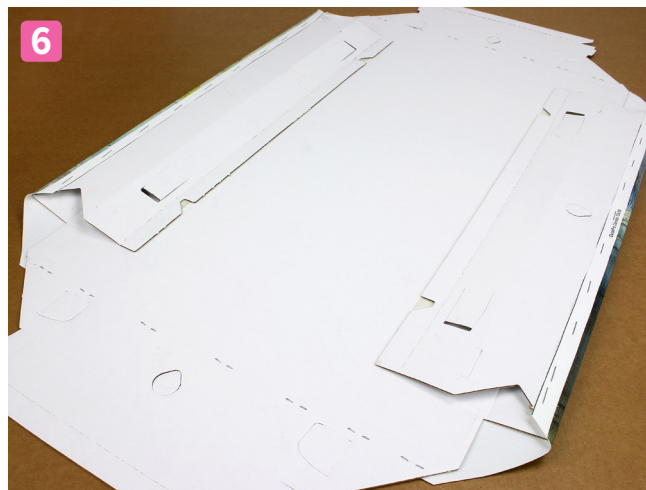
Using a stapler with a 93mm throat, and holding the canvas in position, staple all along each side and stop when you get to the ends of each edge.



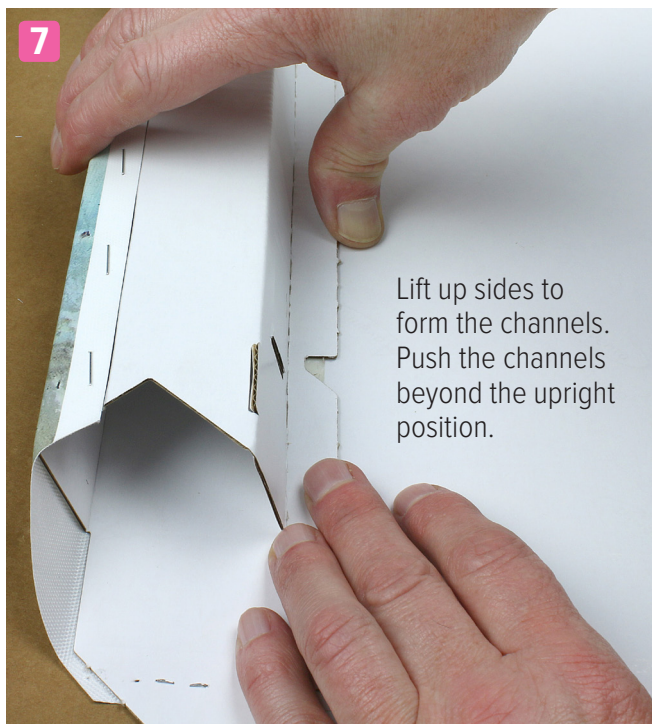
Turn over and detach the corner guidance tabs.



Trim canvas diagonally across each corner app. 5mm away from the board.

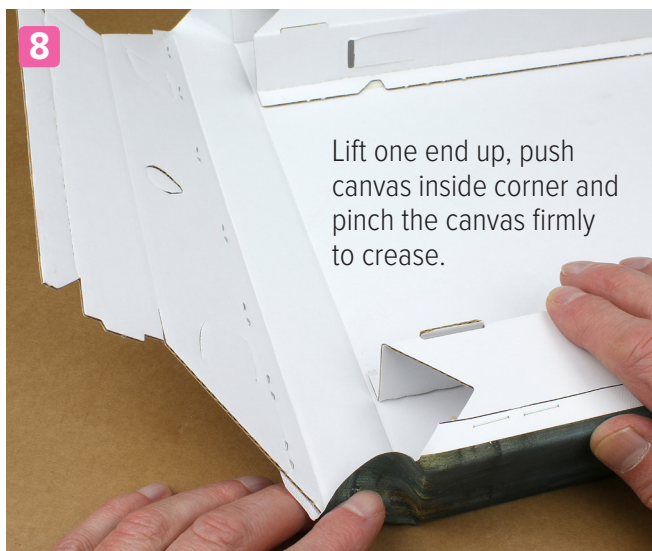


Fold the flap on the crease next to the staples. Press adhesive firmly down. Repeat on the opposite side.



7

Lift up sides to form the channels. Push the channels beyond the upright position.



8

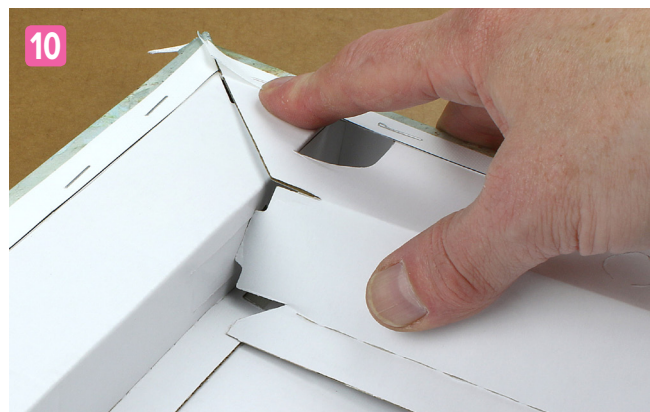
Lift one end up, push canvas inside corner and pinch the canvas firmly to crease.

Press down, hold in place and then roll inner frame edge downwards.



9

Next, finish the ends. Using both hands, press down, hold in place and then roll inner frame edge downwards.



10

Push tabs inwards and line up the location tabs into channels slots. Then push the locking tabs into position. Repeat on the opposite end and you're done!



11

Fitting a black back

Slightly fold up edge along crease. Turn over and remove adhesive backing only from that strip.



12

Line up the back with the canvas panel. Hold in place and press down creased edge firmly. Lift the main part, remove backings and press down.



Finished!

LION Picture Framing Supplies Ltd
 148 Garrison Street, Birmingham B9 4BN
 Tel: 0121 773 1230 info@lionpic.co.uk
 Open 08.45 - 17.00 Monday to Friday

lionpic.co.uk

Prices correct as at November 2016.
 Check before ordering.



More info:

PUB063

